



# Rutgers Grows the Garden State

Our Impact on the Economy  
of New Jersey



**RUTGERS**

# Rutgers Grows the Garden State

Through spending on its day-to-day operations and on long-term construction projects, Rutgers fuels the New Jersey economy.

## Annual Impact of Operations Spending

# \$5.2 billion

- Jobs **58,000** direct and indirect jobs
- Wages and Salaries **\$4.3 billion**
- Purchasing from NJ Companies **\$610.2 million**
- State Tax Revenues **\$403.9 million**
- Local Tax Revenues **\$394.3 million** (statewide)

Rutgers' \$3.5 billion in annual spending on day-to-day operations generates \$5.2 billion in economic activity for New Jersey

## Impact of Construction Spending

# \$1.2 billion

- Jobs **12,000** short-term jobs over five years\*
- Wages and Salaries **\$957.8 million**
- State Tax Revenues **\$82.2 million**
- Local Tax Revenues **\$80.4 million** (statewide)

Rutgers' spending of \$1.14 billion over five years on new construction and renovations generated \$1.2 billion in economic activity for New Jersey

\* Jobs in the category are calculated in "job-years," the total number of short-term (i.e., one-year-equivalent) jobs over a five-year period as a result of capital expenditures. A job-year is equivalent to one job lasting one year.

# Rutgers Provides Jobs for New Jersey

Rutgers contributes to a robust New Jersey workforce. The university is the third-largest nongovernmental employer in the state, directly employing more than 26,000 full- and part-time faculty and staff, as well as teaching and graduate assistants. Salaries paid to these employees, as well as Rutgers' payments to vendors in the state, are spent on consumer items and business goods and services. This spending becomes income and revenue for other workers and businesses, which they spend, indirectly supporting nearly 32,000 additional jobs in the state. Rutgers also hires New Jersey companies to construct new buildings and renovate existing ones, and is in the midst of its greatest building expansion in more than 50 years. We support jobs in those construction companies, and as those construction companies procure materials and services from other companies (and their workers make consumer purchases), even more jobs are supported by Rutgers indirectly. In total, Rutgers has supported nearly 12,000 short-term jobs over a five-year period as a result of capital spending on new and renovated buildings.

## 58,000 jobs

Annually about 58,000 jobs in New Jersey are supported directly and indirectly by the \$3.5 billion Rutgers spends on day-to-day operations\*

**\$4.3 billion** in wages and salaries supported directly and indirectly

## 12,000 jobs

About 2,400 short-term jobs per year over five years or nearly 12,000 job-years were supported directly and indirectly by Rutgers' \$1.14 billion in capital spending on construction, FY 2012 to FY 2016\*\*

**\$957.8 million** in wages and salaries supported directly and indirectly

\* Indirect jobs are found across a wide range of sectors as initial direct expenditures supporting university jobs and third-party vendors ripple through the broader economy, generating indirect employment in other industries such as retail, services, and transportation.

\*\* Jobs in the category are calculated in "job-years," the total number of short-term (i.e., one-year-equivalent) jobs supported from FY 2012 to FY 2016 as a result of the capital expenditures. A job-year is equivalent to one job lasting one year. Indirect jobs are found across a wide range of sectors as initial direct expenditures supporting jobs and business revenues in the construction, engineering, management, and related sectors ripple through the broader economy, generating indirect employment in other industries.





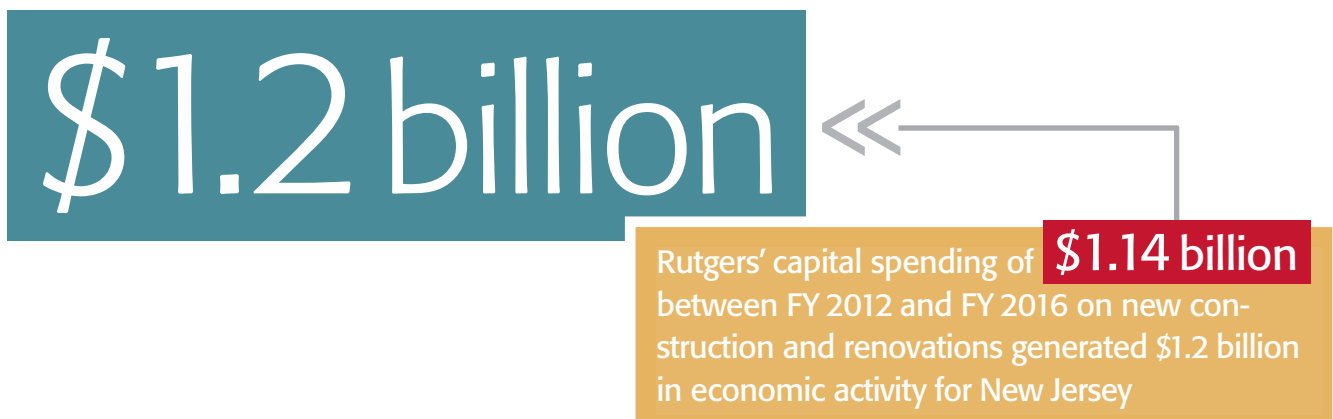
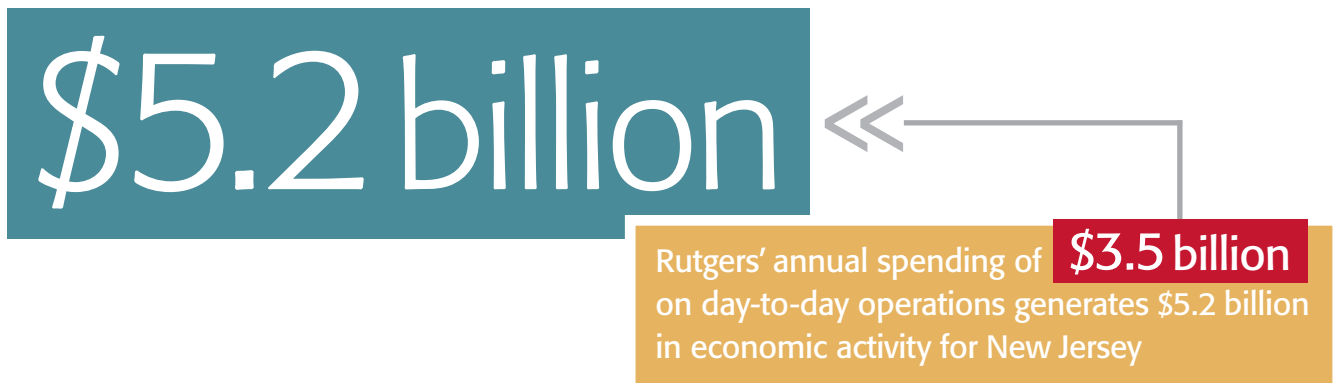
**Lisa Auermuller**  
*Assistant Manager, Jacques  
Cousteau National Estua-  
rine Research Reserve,  
Tuckerton, NJ*

Rutgers' New Jersey Agricultural Experiment Station and the National Oceanic and Atmospheric Administration (NOAA) manage the reserve—115,000 acres of pristine coastal habitat in southern New Jersey.

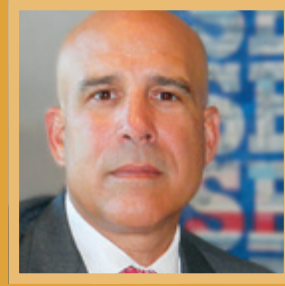
“In my job at Rutgers, I bridge the gap between the latest science and best practices and the New Jersey leaders who make important decisions about coastal areas that are vital to our quality of life and economy. Decision makers may not have science backgrounds, so we work with them as they consider complex information that ultimately affects the public. The result is that everyone is better informed. My position at Rutgers is 100 percent grant funded by sources like NOAA, and each new grant presents an opportunity to build on past successes or try something new.”

# Rutgers Contributes Billions of Dollars to the New Jersey Economy

Rutgers' spending of \$3.5 billion on day-to-day operations surges through the economy, contributing to New Jersey's standing as the state with the eighth-largest gross domestic product in the nation. Gross domestic product is a key measure of economic activity. In addition, Rutgers' capital spending on new construction and renovations, which totaled nearly \$1.14 billion from FY 2012 to FY 2016, drives additional growth, further contributing to economic activity for New Jersey.



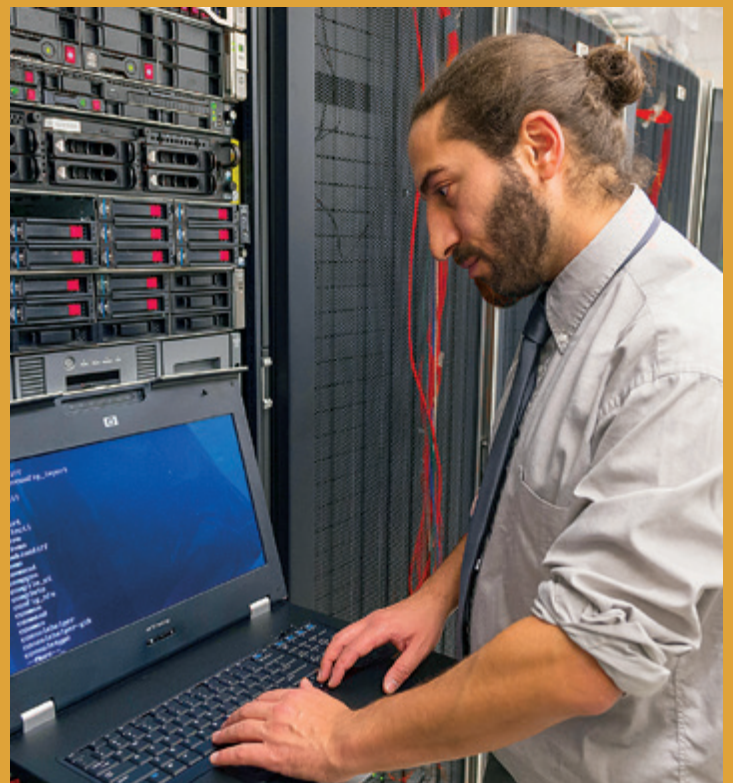




**Joseph Jingoli Jr.**  
*Chief Executive Officer,  
Joseph Jingoli & Son,  
Lawrenceville, NJ*

The Rutgers College Avenue Redevelopment Initiative is the largest construction project on the College Avenue Campus in New Brunswick in 50 years. Joseph Jingoli & Son built three of the public-private collaboration's signature structures.

"Joseph Jingoli & Son was proud to serve as the general contractor and construction manager on the Rutgers Honors College, Rutgers Academic Building, and The Yard @ College Avenue, which includes the Sojourner Truth Apartments and retail destinations. These transformational projects, spearheaded by the New Brunswick Development Corporation (DEVCO), will benefit students for years to come. We all know that every next generation will take us farther into the future. With these projects, DEVCO, Rutgers, and the State of New Jersey ensure that future generations of students will have a great campus and learning spaces."



# Rutgers Buys Goods and Services from New Jersey Businesses

Rutgers buys goods, services, and supplies from vendors across New Jersey to support day-to-day university operations in every county in the state. As a major purchasing force, Rutgers helps businesses in the Garden State expand and thrive.

# \$610.2 million

Rutgers makes \$610.2 million in direct payments to New Jersey businesses through its annual spending to support day-to-day operations

## From Coffee to Lighting: Rutgers' Purchasing Energizes New Jersey Businesses

- Laboratory equipment
- Scientific supplies
- Biomedical equipment
- IT hardware
- High-efficiency motors
- Energy-efficient lighting
- Electrical supplies
- Furniture
- Carpeting
- Construction management services
- Architectural and engineering services
- Electrical services
- IT services
- Translation and interpreting services
- Recycled copy paper
- Recycled garbage liners
- Eco-friendly cleaning chemicals
- Eco-friendly floor care products
- Seed
- Fertilizer
- Turfgrass
- Dairy products
- Pasta
- Baked goods
- Fish, poultry, meat
- Tea and coffee
- Produce
- Napkins, utensils, food trays from recycled materials





**Wes Coleman**

*Manager of Supplier Diversity and Sustainability, Rutgers Procurement Services*

In its purchasing practices, Rutgers encourages faculty and staff to consider the environmental and social impacts of their purchasing decisions.

“Rutgers’ purchasing has a positive impact on the environment, human health, and New Jersey businesses. We buy environmentally sustainable products such as recycled paper, locally sourced food, and eco-friendly cleaning chemicals—much of it from New Jersey suppliers. Energy-efficient lighting and recycled carpeting and ceiling tiles are other examples of eco-friendly purchasing. As an anchor institution in our host towns, we also recognize that our purchasing power can boost the vitality of our surrounding communities. By positioning local enterprises—including small and minority-, veteran-, and women-owned businesses—to compete successfully for contracts, we spur growth and job creation in a wide range of sectors, from furniture and biomedical equipment to interpreting and engineering services.”





# Rutgers' Construction Spending Adds Over a Billion Dollars to the New Jersey Economy

## Significant Rutgers Projects Over Five Years



### 2013

1. Rutgers Business School, Rutgers University–New Brunswick **\$85 million**
2. Solar Canopy, Rutgers University–New Brunswick **\$40.8 million**
3. Robert E. Mortensen Hall, Rutgers University–New Brunswick **\$12.5 million**

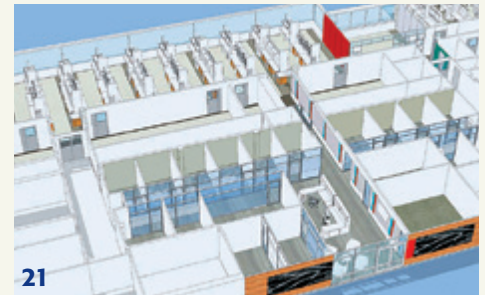
### 2014

4. Rutgers School of Dental Medicine, Delta Dental of New Jersey Special Care Center/ Brunsden-Villa Pediatric Dental Center, Rutgers Biomedical and Health Sciences–Newark **\$4.8 million**
5. Golden Dome Athletic Center Renovation, Rutgers University–Newark **\$1.6 million**
6. Dana Library Renovation, Rutgers University–Newark **\$500,000**

### 2015

7. 15 Washington Street Apartments, Rutgers University–Newark **\$85 million**
8. Honors College, Rutgers University–New Brunswick **\$85 million**
9. Institute for Food, Nutrition and Health, Rutgers University–New Brunswick **\$55 million**





## 2016

- 10. Rutgers Academic Building, Rutgers University–New Brunswick **\$116 million**
- 11. Sojourner Truth Apartments and The Yard @ College Avenue, Rutgers University–New Brunswick **\$91 million**
- 12. Rutgers School of Dental Medicine Oral Health Pavilion C Level Interior Finish Work, Rutgers Biomedical and Health Sciences–Newark **\$13.5 million**
- 13. Kathleen W. Ludwig Global Village Living Learning Center, Rutgers University–New Brunswick **\$11.5 million**
- 14. Writers House, Rutgers University–Camden **\$4.5 million**
- 15. Alumni House, Rutgers University–Camden **\$2.5 million**

## 2017 (to be completed)

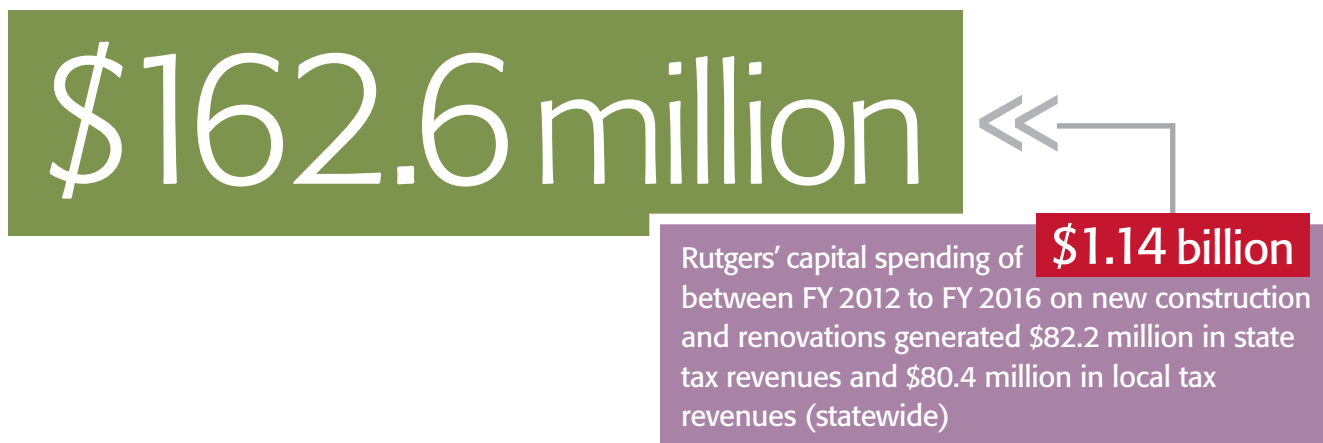
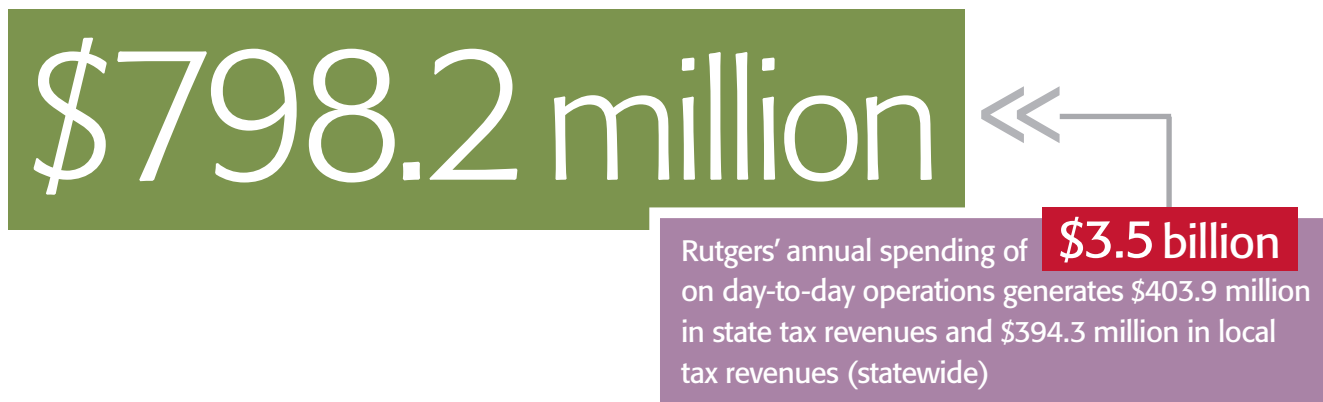
- 16. Chemistry and Chemical Biology Building, Rutgers University–New Brunswick **\$115 million**
- 17. Nursing and Science Building, Rutgers University–Camden **\$62.5 million**
- 18. Life Sciences Center Phase II, Rutgers University–Newark **\$59 million**
- 19. Ernest Mario School of Pharmacy Building Addition, Rutgers Biomedical and Health Sciences–Piscataway **\$37.5 million**
- 20. Express Newark, Rutgers' Part of Hahne & Co. Renovation, Rutgers University–Newark **\$25 million** (opened January 2017)
- 21. Rutgers School of Dental Medicine Laboratory Renovation, Rutgers Biomedical and Health Sciences–Newark **\$16 million**
- 22. Rutgers Business School Interior Finish Work, Rutgers University–Newark **\$11 million**



# Rutgers Bolsters New Jersey's Tax Base

Rutgers' spending strengthens New Jersey's tax base at both the state and local levels. Income, sales, corporate, property, and other taxes are derived from Rutgers' support of jobs in New Jersey and through the impact of its spending on day-to-day operations and capital construction.

Income taxes come from salaries paid to employees of Rutgers, of companies with which Rutgers does business, and of companies who benefit from Rutgers' additional economic activity. Sales, corporate business, and other state taxes are associated with economic activity generated by Rutgers' spending. Property taxes are paid by individuals and businesses that own, build new, or improve properties, using income and revenue derived from Rutgers' spending.





**Host City: Camden**



**Host City: Newark**

Rutgers employees live in our host cities as well as every county and legislative district in New Jersey. Their salaries are a source of state and local taxes.



**Host City: New Brunswick**



**The State Capital of New Jersey: Trenton**

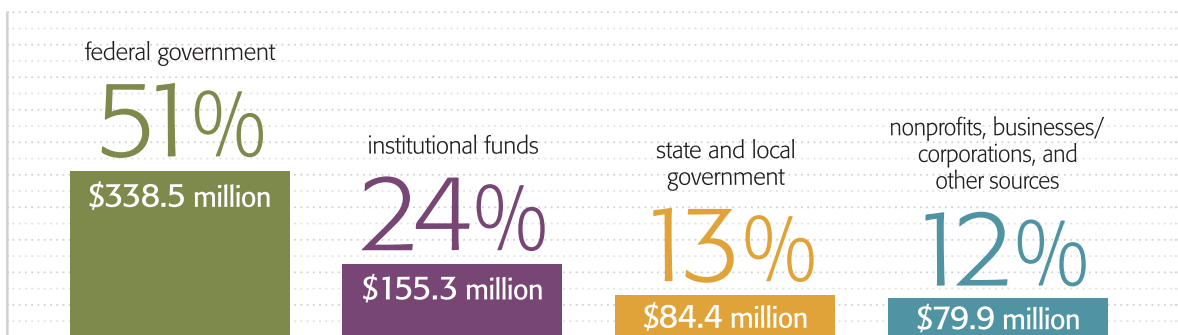


# Rutgers Research Sparks Innovation and Attracts Funding to New Jersey

Rutgers research leads to new knowledge, enhancing lives and advancing society. Research fuels New Jersey's economy by attracting funding dollars from government, corporate, and other sources; by generating revenue through technology commercialization and licensing; and by nurturing startup companies—based on Rutgers inventiveness—that create jobs and stimulate further economic activity.

## \$658.1 million

Rutgers spends more on research and development than all other public and private New Jersey universities combined, according to the National Science Foundation



Rutgers Research Expenditures by Funding Source

### Rutgers Research Gets Results (FY 2015 and FY 2016)

**352** inventions disclosed

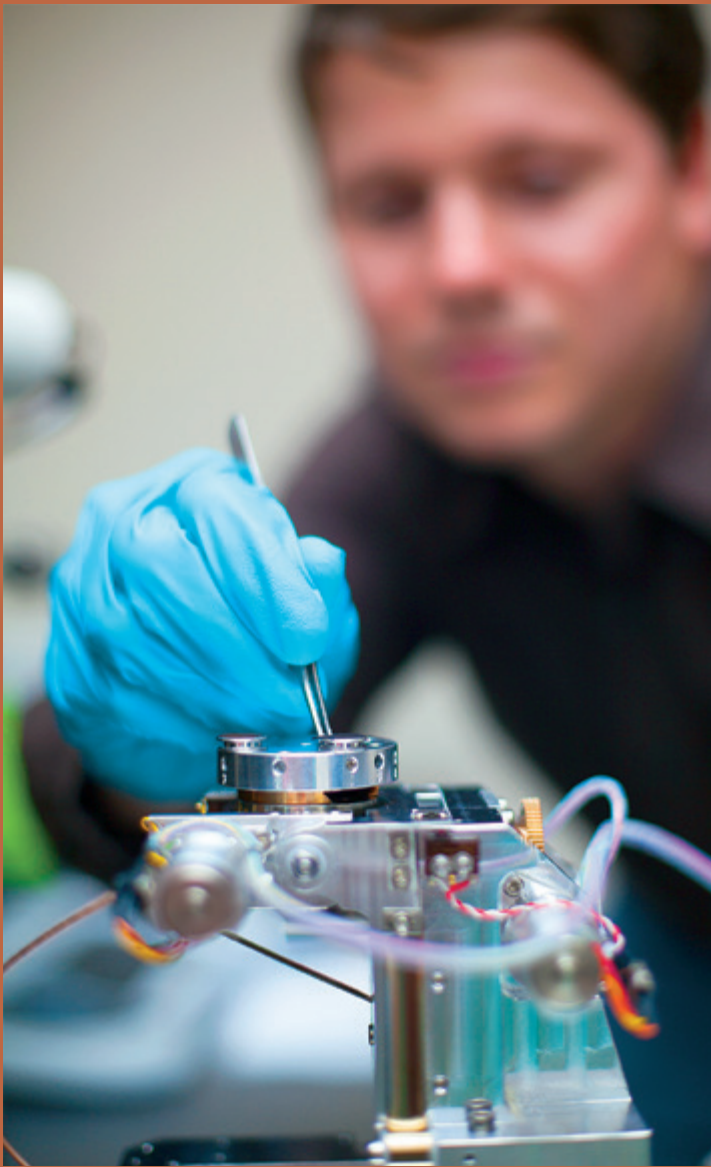
**182** license agreements

**309** total patents granted

**\$31.5 million** in royalty income from patents and licensing

**119** startup businesses

**39** active spinoffs/startups in New Jersey



**David Perlin**

*Executive Director and Professor, Public Health Research Institute (PHRI), Rutgers' New Jersey Medical School*

PHRI scientists conduct basic research that leads to groundbreaking diagnostic tools and medical treatments for infectious diseases.

“One of our major programs is a public-private effort aimed at developing new antibiotics to regain the upper hand over deadly bacteria that have become resistant to current treatments. The research, funded by a five-year, \$26.7 million National Institutes of Health (NIH) grant, has supported the salaries of dozens of researchers and support personnel, including faculty, instructors, research associates, lab technicians, and postdoctoral fellows. In hospitals in New Jersey and across the nation, people are dying of drug-resistant infections. To overcome this health crisis, we need to develop new medications. Our team, with NIH support, is advancing that goal.”



# Rutgers Health Care Improves Lives

In the rapidly changing, increasingly competitive health care landscape, Rutgers Health—our patient care organization—stands as a national leader in academic health care. By providing an unmatched range of topflight clinical practice services, Rutgers’ physicians, dentists, nurses, and other health care professionals work together to help patients across New Jersey reach a peak level of health and wellness. Rutgers’ broad instructional, research, and clinical activities present significant opportunities for clinical trials, patient care, and additional pursuits that produce economic and further benefits for the university and the state.

**\$684 million**

In FY 2016, Rutgers devoted over \$684 million to patient care services, delivering compassionate, academic medicine—research, clinical trials, technology, and specialists—close to home.

**\$12.6 million**

In FY 2016, Rutgers provided \$12.6 million in low-cost and no-cost, high-quality health care services to low-income patients, particularly those who live in traditionally underserved areas.

## Rutgers Helps New Jersey Stay Healthy

Conducted more than **350** clinical trials

Employed more than **1,300** health care professionals



**Karla Guillen**

*Rutgers Cancer Institute  
of New Jersey Patient,  
New Brunswick, NJ*

A breast cancer diagnosis and related financial difficulties put Karla Guillen in a tough spot. But with help from Rutgers Cancer Institute of New Jersey, she is feeling good and back in control.

“My breast cancer treatment involved chemotherapy and surgery. I am so grateful for my medical recovery but also for other support I received at Rutgers Cancer Institute. The chemo caused hair loss so I asked my social worker about how I could get a free wig. That discussion led to another about the financial strain my illness was causing my family. We were on a tight budget, and the social worker helped connect us to various resources so we could get our finances back on track. I think people don’t have enough information to realize they can ask for help beyond medical care. Assistance is available, and the institute’s social work team looked at our whole situation and helped our family a lot.”





# For Every State Dollar Rutgers Receives, We Return \$6.70

For each \$1 of state appropriation received by Rutgers for FY 2016, the university returned \$6.70 in economic activity (gross domestic product) to the state economy.



**\$5.2 billion** ←

New Jersey's FY 2016 **\$775.7 million** state appropriation for Rutgers produced a substantial yield. Leveraging these state dollars, Rutgers returned \$5.2 billion to the Garden State's economy.\*

\*The \$775.7 million state appropriation leverages an additional \$2.7 billion in funding through tuition revenue, research grants and contracts, and other sources.

## About the University

Rutgers, The State University of New Jersey, is a leading national research university and the state of New Jersey's preeminent, comprehensive public institution of higher education. Established in 1766, the university is the eighth-oldest higher education institution in the United States.

## A Source of Pride for New Jersey

- Top 100 world university
- Top 25 U.S. public research university
- Top producer of student Fulbright Scholars for eight years running
- Member of the prestigious Association of American Universities, a group comprising North America's 62 leading research universities; Rutgers University–New Brunswick and Princeton are New Jersey's only AAU members
- Home of Rutgers Health, New Jersey's leader in academic health care

## Rutgers Fast Facts

### Students, employees, and alumni

- 69,000 students, 83 percent of whom are New Jersey residents
- New Jersey's third-largest nongovernmental employer, with more than 26,000 full- and part-time faculty and staff, including teaching and graduate assistants
- 486,000 alumni worldwide, more than half living in New Jersey

### Statewide Presence

- Students, faculty, staff, and alumni from all 21 New Jersey counties
- New Jersey Small Business Development Centers across the state
- Rutgers Health treats patients in facilities across the state
- Rutgers Cooperative Extension Offices in all 21 counties

The content of this brochure is based on information in the report *Contribution of Rutgers University to the New Jersey Economy*, produced by R/ECON, the Rutgers Economic Advisory Service of Rutgers' Edward J. Bloustein School of Planning and Public Policy. For further information, visit: [economicimpact.rutgers.edu](http://economicimpact.rutgers.edu)

Photo credits: Courtesy Cannon Design, Courtesy Clarke Caton Hintz/Ellenzweig, Darren Edwards Photographs–Courtesy New Brunswick Development Corporation, John Emerson, Courtesy Ewing Cole, Courtesy Flad Architects, Roy Groething, Courtesy Karla Guillen, Don Hamerman, Courtesy Joseph Jingoli & Son, Courtesy Nelson/Perkins Eastman, Lori M. Nichols, Jacob Paul, Nick Romanenko, Courtesy Rutgers Office of Information Technology, Courtesy Syska Hennessy Group

Rutgers is accredited by the Middle States Commission on Higher Education

© Rutgers, The State University of New Jersey, 2017

RU-1617-0107/5M





RUTGERS

Department of External Affairs  
Winants Hall  
Rutgers, The State University of New Jersey  
7 College Avenue  
New Brunswick, NJ 08901-1280  
[rutgers.edu](http://rutgers.edu)